

Tower storage systems

Space-saving storage solution for bar stock, sheet metal, pallets and much more

www.kasto.com

Saws. Storage. And More.

**KASTO**[®]



KASTOecostore for bar stock and sheet metal Compact and standardised storage

Flexible division - up to 8 m system height

Technical Data		Bar stock	Sheet metal
Storage location dimensions (W x L)	mm	840 x 6500	1,524 x 3,048 / 1,524 x 4,064
Load per cassette / pallet	to	1.2 / 3.0	1.2 / 3.0
Cassette loading heights	mm	105 / 145 / 215 / 255 / 355 / 455 / 800	-
Pallet loading heights	mm	200 / 350 / 550 / 800 / 1,000	50 / 90 / 130 / 200 / > 200 - 950*
System height	mm	3,000 - 8,000	3,000 - 8,000
Lift / pull speeds	mm	12 / 6	12 / 6
Space requirement standard version single-sided version			
Length	mm	approx. 7,690	approx. 4,120 / 5,120
Width	m/ min	approx. 2,600	approx. 3,425
Space requirement automatic version with extended safety device (single-sided version)			
Length	kW	approx. 8,080	approx. 4,740 / 5,740
Width	mm	approx. 3,480	approx. 4,275
Space requirement automatic version with extended safety device (double-sided version)			
Length	mm	approx. 8,130	-
Width	mm	approx. 5,045	-

* in a 50 mm grid, max. 3 different loading heights possible

Your benefits at a glance

Time saving through direct access without additional lifting equipment

Height-adjustable, modular pallet supports for different loading heights

A comprehensive safety concept prevents malfunctions and prevents costly downtimes

Low space requirement through consistent use of height

Can be installed close to machine

Up to three different loading heights to choose from



KASTO *AdvancedControl* storage control with compartment preselection and acknowledgement key
Lifting beam and pallet in sheet metal format with chain hoist and loading height control and steel construction with sliding support, pallet with socket pins (option).



Stationary lifting gear with synchronous driveshaft



Storage aid for load release (option)

KASTOecostore for bar stock



Use storage space efficiently

The standardised storage system is suitable for all applications with a wide variety of materials that can be stored as bar stock or sheet metal. The height-optimised compartment division enables high storage density in the most confined spaces. This leads to better organisation, cleanliness and safety. The automated tower storage system is available in single and double-sided versions. The system height ranges from 3 to 8 metres and can optionally be equipped with cassettes for storing bar stock or flat pallets for storing other stored goods such as boxes, pallets, tools, etc. Rods, pipes, profiles and solid materials up

to 6.5 metres in length can be stocked. Up to three different height divisions can be defined for each storage system.

The load handling attachments each have a load capacity of up to 3 tons, are stored automatically and retrieved and brought to the optimum loading and unloading height with a hoist. This means that no additional lifting equipment, such as a forklift, is required to retrieve the cassette. This ensures short access times and an ergonomic way of working.

Technical Data		KASTOecostore for bar stock	
Storage location dimensions (W x L)	mm	840 x 6500	
Load per cassette / pallet	mm	1.2 / 3.0	
Cassette loading heights	mm	105 / 145 / 215 / 255 / 355 / 455 / 800	
System height	mm	3,000 – 8,000	

KASTOecostore for sheet metal



Options:

- Socket pins for pallets to prevent movement of the stored goods
- Storage aid with lifting bolts for unpacking sheet metal and for better load handling with a forklift or crane
- Automatic control with safety device
- Extension of the standard control to include item and inventory management
- Station cart can be moved manually for loading/unloading the storage system from the rear
- Side handles for C-profile cassettes to adjust the loading height

Technical Data		KASTOecostore for sheet metal
Storage location dimensions (W x L)	mm	1,524 x 3,048 / 1,524 x 4,064
Load per cassette / pallet	mm	1.2 / 3.0
Pallet loading heights	mm	50 / 90 / 130 / 200 / > 200 – 950*
System height	mm	3,000 – 8,000

* in a 50 mm grid, max. 3 different loading heights possible

UNITOWER



UNITOWER tower storage system

The storage system for more efficiency

UNITOWER offers significant space, time and handling advantages over conventional storage options such as shelves, floor storage or stacking cradles. The system is available in single- or double-sided design, whereby the single tower can be expanded to a double tower at a later time. The UNITOWER is suitable for bar materials or profiles as well as for sheet metal, panels, Euro pallets and boxes that can be load-

ed with all types of goods. This system also shows its strengths as a lone-standing solution, customer-specific design or with the customer's own transport frames. Areas of application for UNITOWER are e.g. buffer storage in production or small and medium-sized storage quantities in steel and other trading businesses. However, the UNITOWER can also optimise material flow in metalworking shops, window

Technical Data		Bar stock	Sheet metal
Max loading capacity	t	1 - 5	1 - 5
Max system height	m	up to 24	up to 24
Usable storage length	mm	3,400 - 14,600	2,000 - 8,000
Usable storage width	mm	600 / 680 / 840 / 920 / 1,240	1,000 / 1,250 / 1,500 / 2,000
Lifting speed	m/ min	14 - 32	14 - 32
Self-supporting		Option	Option
Automatic control		Standard	Standard
Material inventory management		Option	Option
Warehouse Management System		Option	Option
Connection to host systems		Option	Option
(special dimensions on request)			

construction companies, etc. Since an individual design with selectable storage lengths and heights permits adaptation to any material flow concept, consultation with KASTO planning experts is recommended. In contrast to vertical carousel systems, it is not the entire storage volume that is moved, but only the desired storage space.

Area gain through building cladding and pit solution

UNITOWER can not only be fitted into the existing hall as required, but also simply covered with roof

and wall, set up on the outside to save space or set up through the roof in the hall. Ground pit solutions can also be implemented to expand storage capacity. This allows full use of the possible construction height. In addition, valuable hall space can be made available for production at low cost and the structure of the system has less of an impact on the internal flow of materials during the construction phase. The self-supporting nature of the *UNITOWER* saves additional space and taxes: Cladding the steel construction with sheet metal to make it weatherproof creates a structure that can be written off favourably for tax purposes.



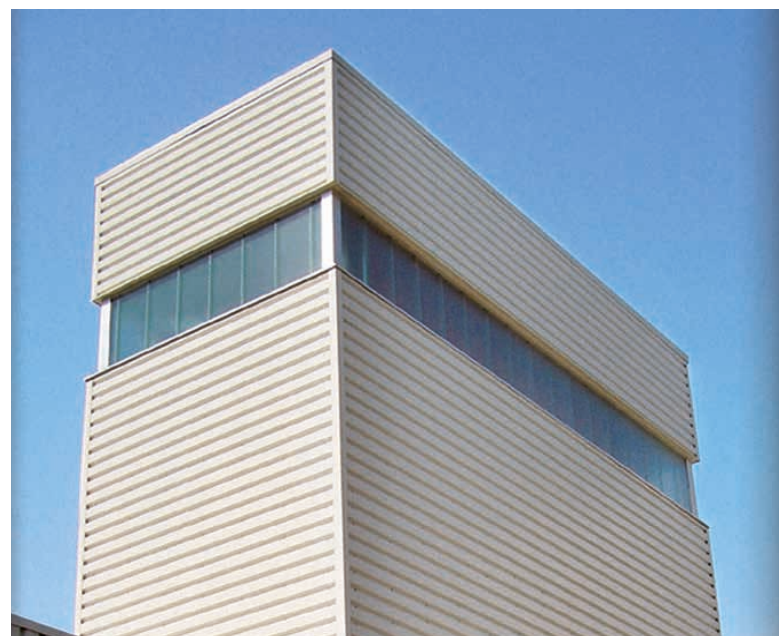
UNITOWER in self-supporting design



UNITOWER in self-supporting design

UNITOWER in self-supporting design

UNITOWER with in-house cladding to protect stored goods



UNITOWER for bar stock



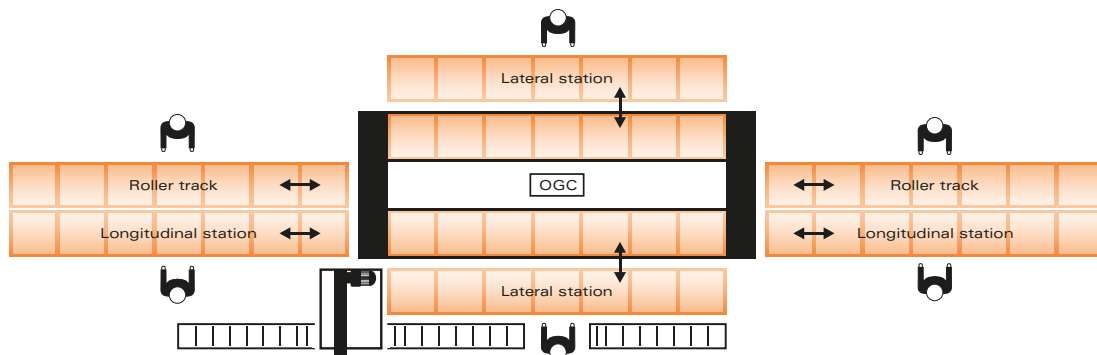
UNITOWER for bar stock

Compact, fast, versatile

The KASTO UNITOWER bar storage system offers easy operation and quick provision of loads, depending on customer requirements, up to 5 tons per cassette. The total capacity of the double-tower version is up to 500 tons. The self-supporting bar goods cassettes can be divided into several individual compartments, but load carriers can also accommodate pallets and crates. By installing several retrieval and storage stations, it is possible to work independently at the same time. The KASTO control allows inventory management by metre, kilogram or number of pieces with material identification numbers. Connection to a warehouse management or host computer is easy.

Stations for every application

For individual storage and retrieval, both transverse stations on the broad sides and longitudinal stations on the front sides of the UNITOWER can be implemented, and different floor levels are also possible. The connection or integration of a KASTO sawing machine is also possible.



Options

- Integrated weighing device, with weight-managed material on request with connection to the automatic inventory management
- Cassettes lined with plastic, for example for damage-free storage of aluminium or plastic profiles
- Material lifting unit as an alternative to loading and unloading with loops or for forklift operation
- Integration of barcode reader
- Connection of two tower storage systems possible
- Installation of a crane system for material loading/unloading



Material cassette for conveyor



Material tower with material on both sides



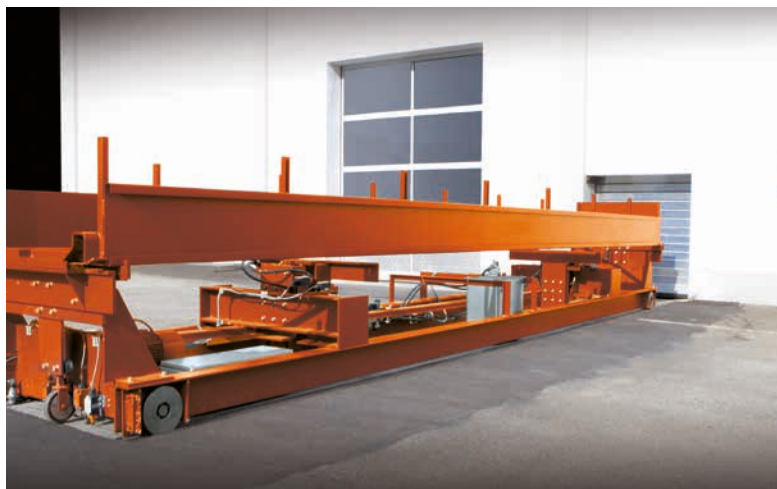
Material cassette for conveyor with push-up device

Longitudinal station carriage through the building, with roller bearing (Self-propulsion)



Material tower with travelling overhead crane and Beladekran

Cross station carriage with cassette support



UNITOWER for sheet metal formats

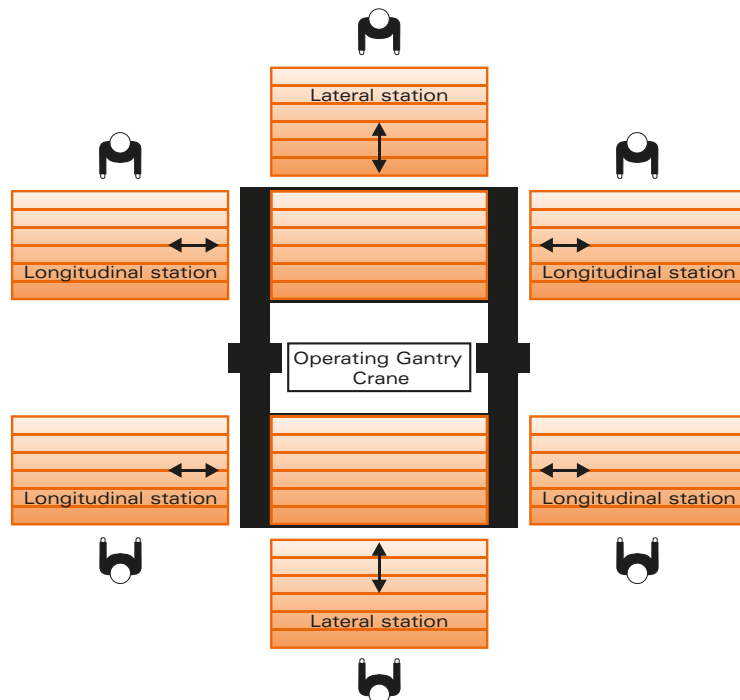


UNITOWER for sheet metal formats

High volume, little space

The KASTO UNITOWER B sheet metal storage system is optimally designed for the requirements of sheet metal processing and can be used for different loading heights. Stations are available for all warehouse

sides. The storage station can be supplemented with a storage rack for free lifting of the goods to be loaded. Unpacking tables are also available.



Stations and options for every application

Stations:

Transverse and longitudinal stations on all sides and even on different floors enable an individual concept for designing storage and retrieval. The connection or integration of sheet metal processing machines is also possible.

Options:

In addition to the options listed for bar goods, the following are also available:

- Rotating device
- Conveyor device



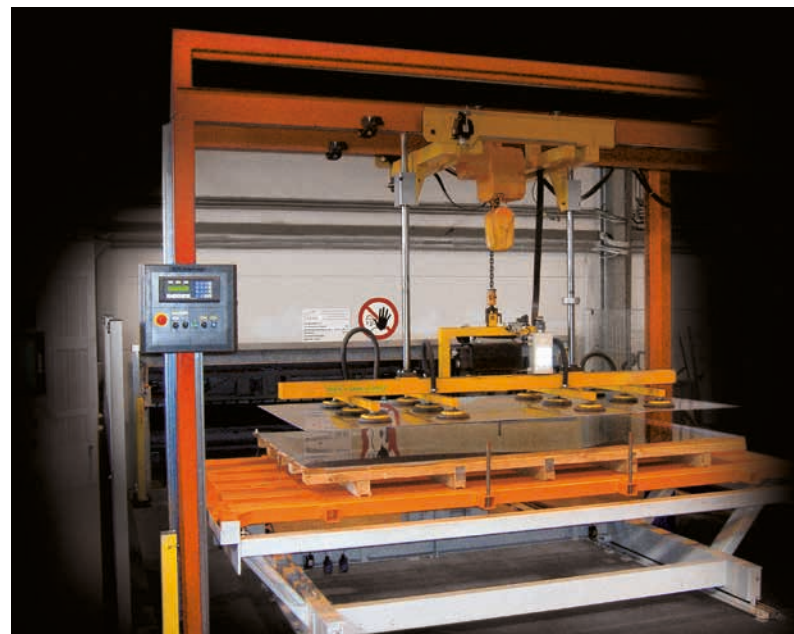
UNITOWER B, extended to two operating gantry cranes.



Longitudinal station carriage with free lifting device

Longitudinal station wagon with free lifting device

Vacuum device



KASTO - Saws. Storing. And More.

Excellence in all areas

For nearly 180 years, KASTO stands for innovation and exceptional quality. In addition to metal saws and automated storage systems for long goods and sheet metal, KASTO offers customised material logistics solutions. Our range of products is complemented

by cutting-edge digital software solutions and reliable KASTO services. KASTO has become the global leader in sawing and storage of metal through their dedication to advancing technology and constantly improving machine concepts.

Sawing machines from KASTO



KASTO offers a wide range of saws, from saws for the machine shop to fully automatic high performance sawing machines including hacksaws, bandsaws and circular saws. www.kasto.com/saws

Storage solutions from KASTO



KASTO's storage systems are known for their efficient use of space, easy accessibility, and excellent storage overview. www.kasto.com/storage

KASTO-Service



Rapid availability of spare parts and individual customer support are an integral component of KASTO-Service. KASTOretrofit is a service to modify existing systems to meet current demands. www.kasto.com/service

KASTO SmartSolutions



KASTO provides digital automation solutions that enhance the efficiency, flexibility, and cost-effectiveness of metal processing and storage. www.kasto.com/smart

Your KASTO partner:

KASTO Maschinenbau GmbH & Co. KG
Industriestr. 14
DE-77855 Achern
+49 7841 61-0
kasto@kasto.com
www.kasto.com